



EDULLECT ACADEMY
— INDEPENDENT SCHOOL —

KNOWLEDGE ~ FAITH ~ PURPOSE

PARTNERSHIP PROPOSAL

ESTABLISHING A NEW BRANCH OF EDULLECT ACADEMY INDEPENDENT SCHOOL



Shah Sher Ali
Founder & CEO
2025-26

- Edullect Academy welcomes partnerships with individuals, charities, and organisations
- **Aim:** Establish new branches in selected localities and regions
- Model adaptable for UK and international contexts
- This proposal outlines governance, operations, and partnership options



Introduction

Each branch of Edullect Academy is built upon:

- Academic excellence and inclusive curriculum
- Islamic values and spiritual enrichment
- Community-led governance and ethical leadership
- Operational transparency and long-term sustainability
- In exceptional cases, commercial partnerships under a profit-sharing model may be considered for international branches



Vision & Ethos

| Level | Description |
|--|--|
| Executive Leadership | Oversees curriculum, staffing, quality assurance, strategic direction, and financial/resource management |
| Governance: Strategic Leadership Committee | Joint governance body with Edullect and local partner(s); commercial partners may nominate representatives |
| Community Engagement | Advisory working groups: Curriculum & Quality Student Enrichment, Safeguarding & Health and Safety, Marketing, Publicity & Digital Engagement |

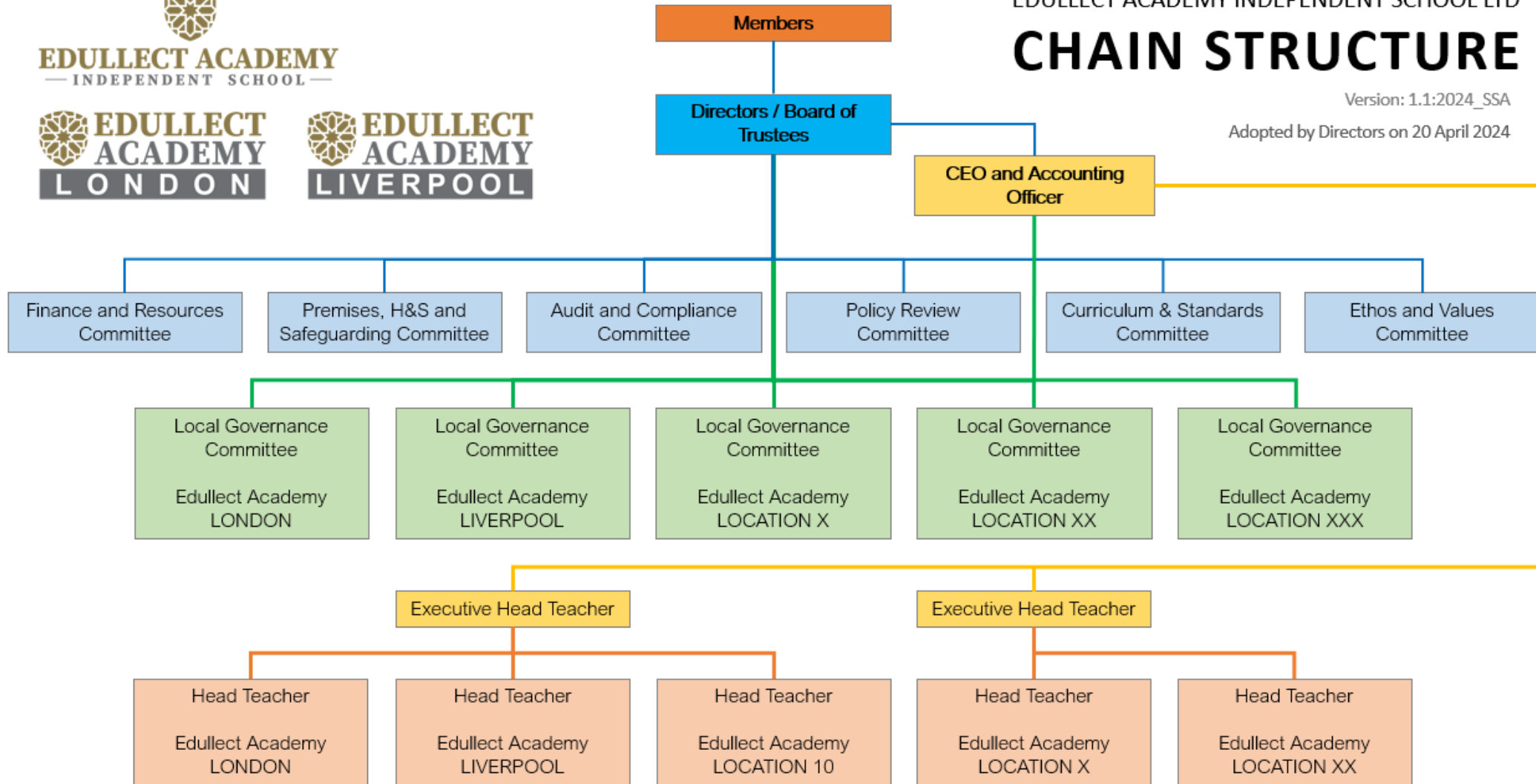


Governance & Leadership Structure

CHAIN STRUCTURE

Version: 1.1:2024_SSA

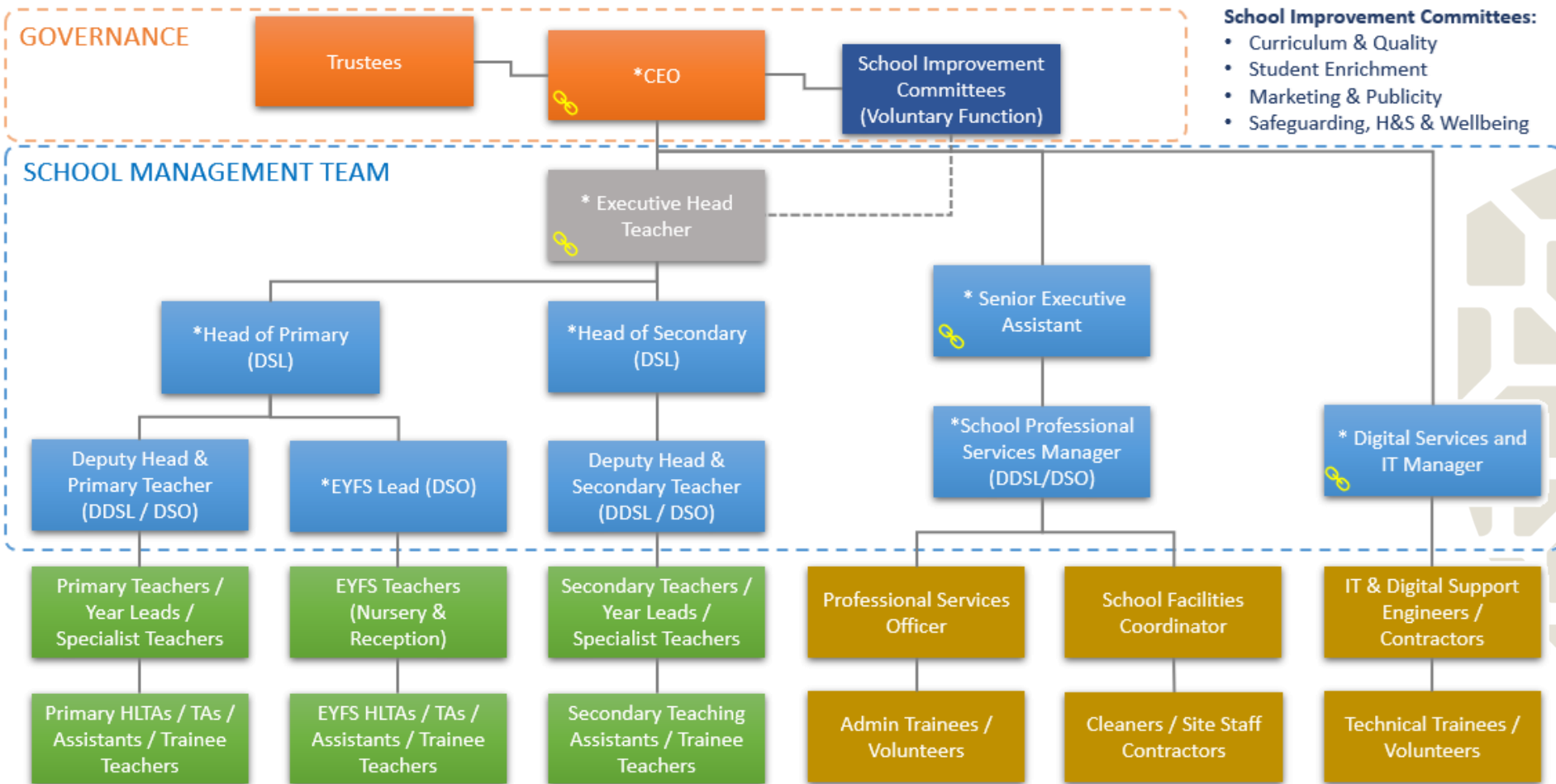
Adopted by Directors on 20 April 2024



Edullect Academy Chain Structure

Edullect Academy Independent School HR and Management Structure

September 2025 | Version Ref.: 001/09.25



DSL: Designated Safeguarding Lead | DDSL: Deputy Designated Safeguarding Lead DSO: Designated Safeguarding Officer

Work across the school chain – Shared cost



Edullect Academy School Structure

Charitable or Community-Based Partners:

- Raise, provide or secure funding
- Support property acquisition
- Join governance and working groups
- Lead local outreach
- Engage in the strategic growth to support local/national needs

Commercial Partners (Local/International):

- Invest capital for setup
- Enter profit-sharing agreement
- Nominate governance representatives
- Collaborate on strategic growth
- Uphold Edullect's educational standards



Role of the Local Partner

- Land and property will be jointly owned by the school and the partner, with the school as **exclusive beneficiary**—protecting assets for local educational needs
 - A local **company limited by guarantee** or an equivalent legal structure may hold the property
 - Guarantors may include:
 - Local representatives
 - Edullect Academy Independent School
 - Existing charities or commercial partners (in profit-sharing models)
- Benefits:**
- Shared trusteeship
 - Legal clarity
 - Community representation
 - Protection of local interests



Property Ownership & Trusteeship

- **Curriculum:** British national or accredited, with Arabic, Islamic Sciences, and Qur'anic Studies for Muslim students
- **Identity:** Branded as Edullect Academy [City/Region]
- **Staffing:** Managed by Edullect's executive team
- **Quality Assurance:** Regular reviews and reporting
- **Governance:** Shared and owned locally for local benefits
- **Profit-sharing:** Joint financial oversight, reinvestment, surplus distribution, and asset management (commercial/international partnerships)



Operational Model

- Exceptional education and corporate leadership
- Proven educational model with community trust
- Shared governance with local engagement and impact
- School tailored to local needs and aspirations
- Empowering ethical, confident young leaders to lead tomorrow
- Strategic growth across UK and abroad
- **For commercial partners:** ethical investment with social impact with excellent financial return for the long-term



Benefits of Partnership

1. Submit a formal **expression of interest** to CEO
2. Attend a **consultation** with Edullect leadership
3. Review and co-sign a **Memorandum of Understanding (MoU)**

Mr Shah Sher Ali – Founder & CEO

✉ Shah@EdullectAcademy.co.uk

☎ 077 1510 2446

🌐 London.EdullectAcademy.uk

📍 Melville Court, Spilsby Road, Romford,
Essex, RM3 8SB, UK



NEXT STEPS & CONTACT DETAILS